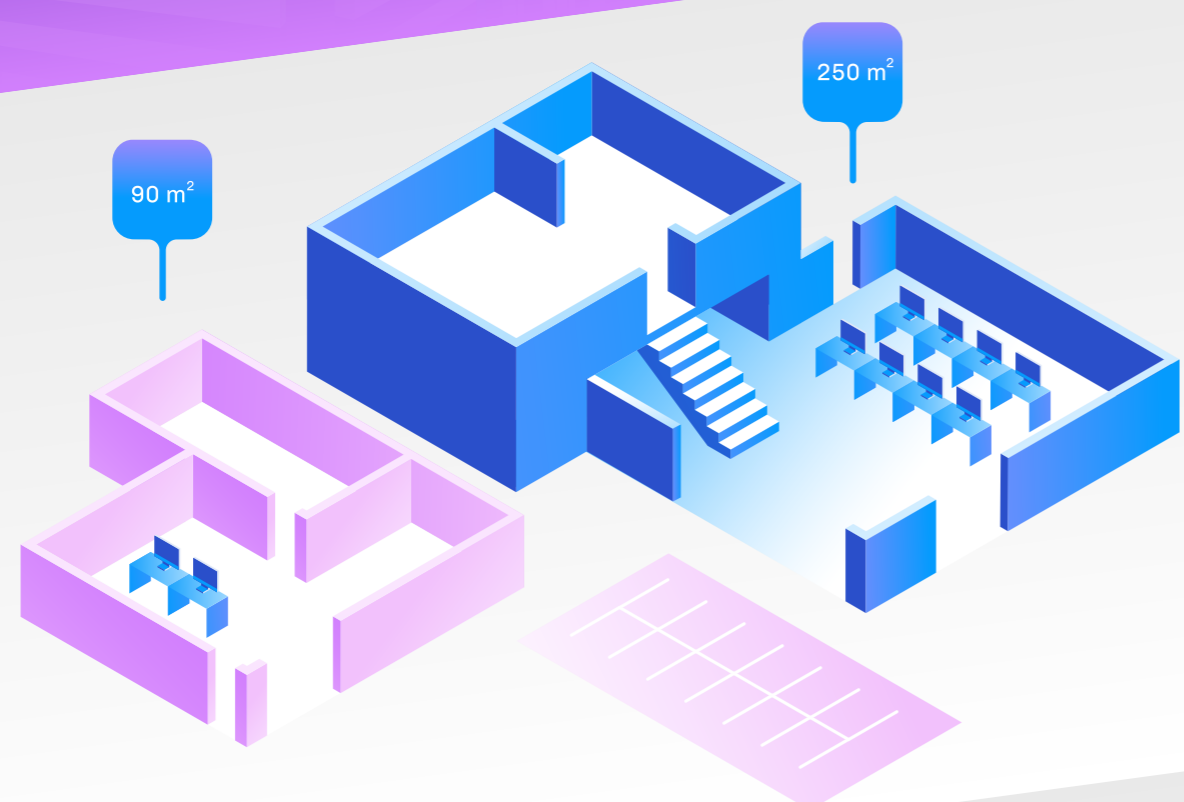


# Culver CITY

= IN 2019 =



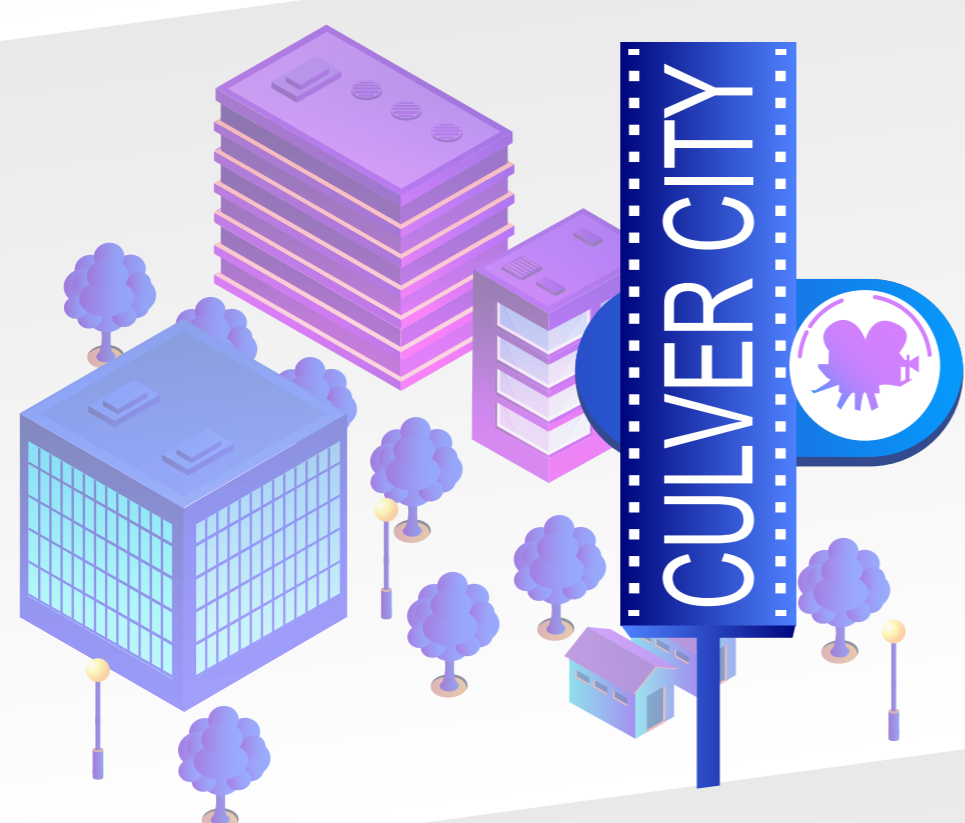
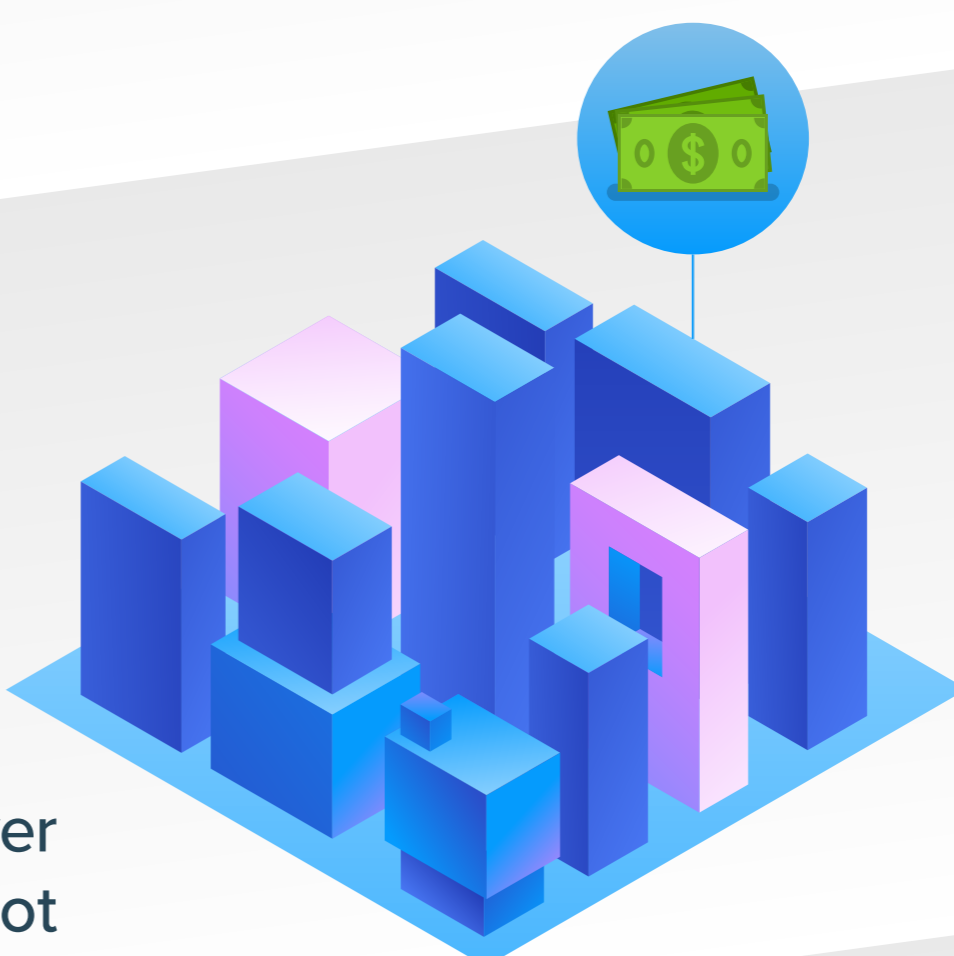
000

square feet of office space was leased

\$000

of leasing activity was completed

**NOTE:** The average cost of rent in Culver City is now **\$XX** per square foot



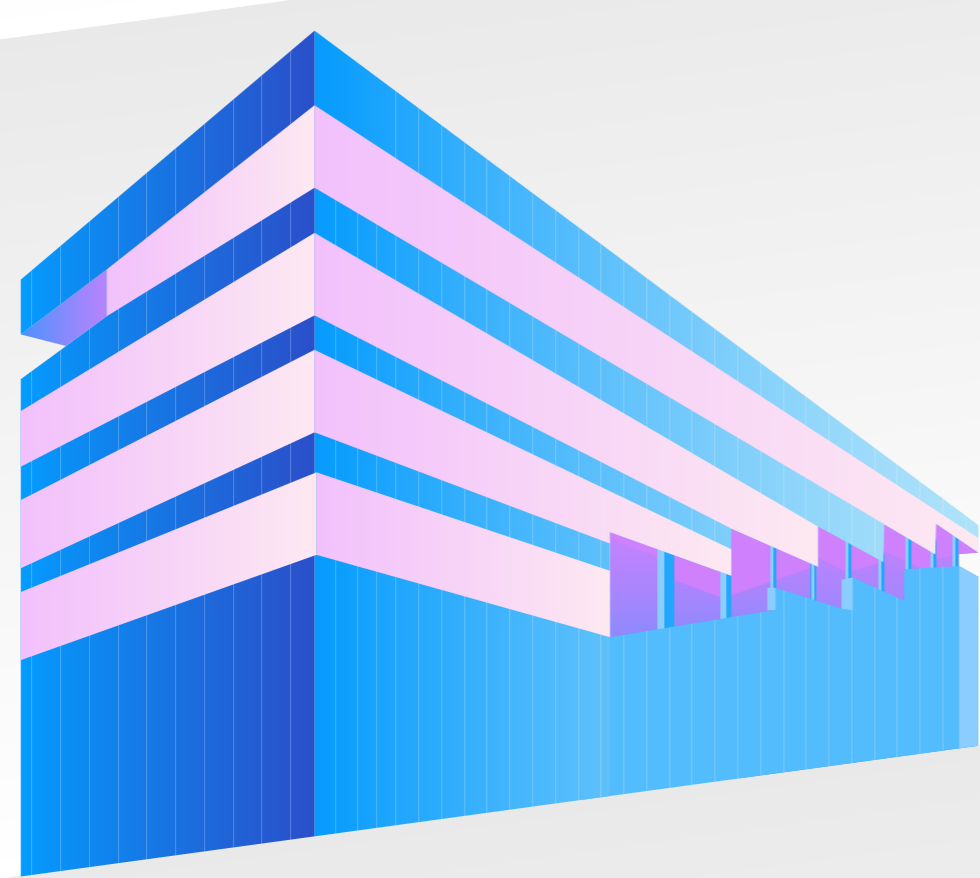
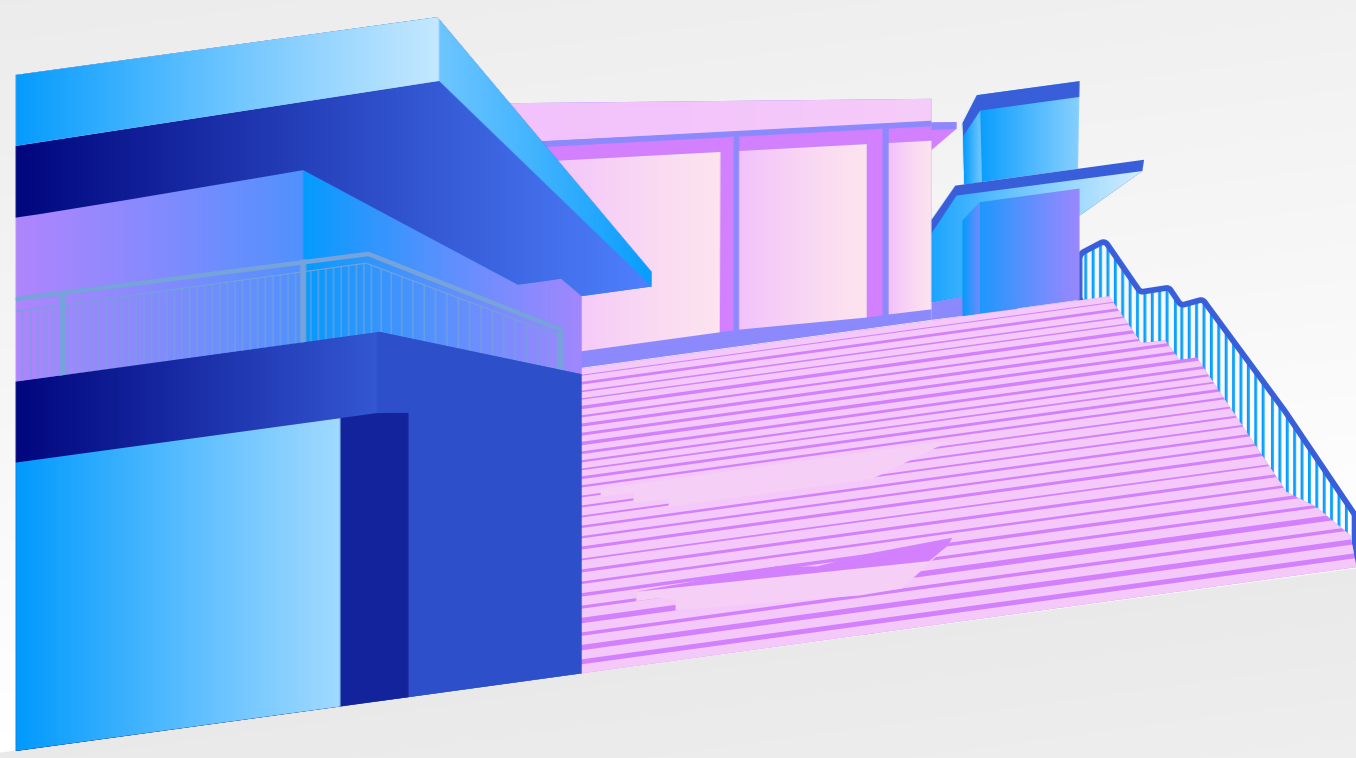
Culver City sees over

**\$1 billion**

in development

Culver Steps reaches completion in **JULY 2019**

**NOTE:** The city reaches **100%** renewable energy



Entrada Office Tower reaches plan check phase- a new

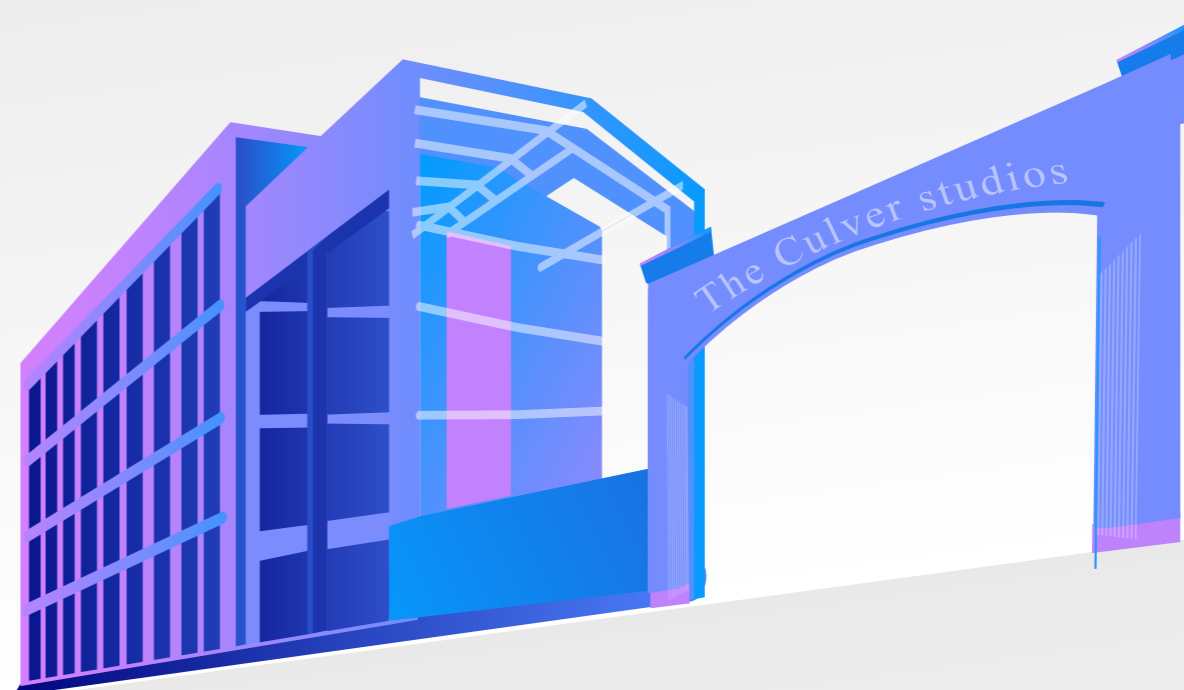
**281,196**

square foot creative office building

**amazonstudios**

Amazon Studios leases the entirety of the office space at the Culver steps in

**JULY 2019**



**NANTWORKS**

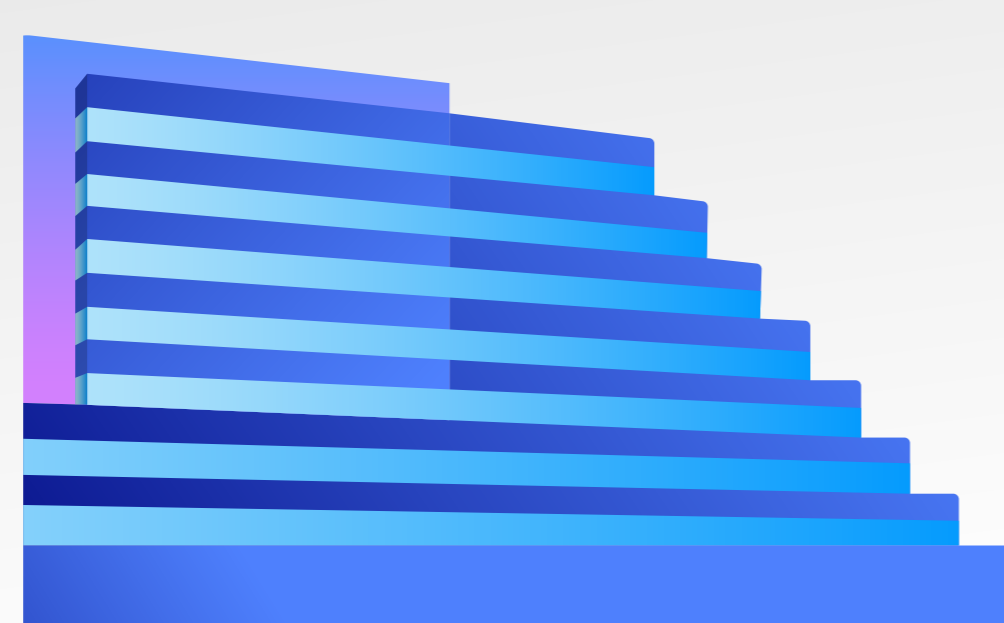
NantWorks, the biotech firm, begins expansion of its Culver City headquarters.



Apple announces it will have

**1,000**

employees in Culver City by 2022



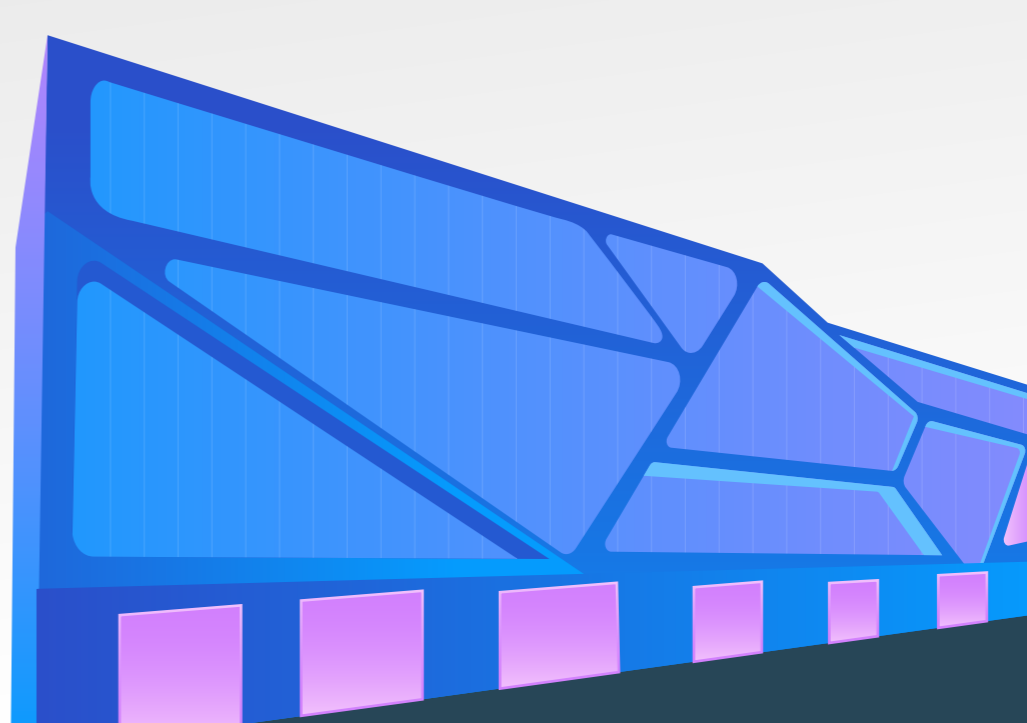
**SONY**

Remodeling of Sony Pics Plaza and office building at One Culver including

**16,000 SF**

of office space.

**SCOPELY**  
SEIZE THE PLAY  
Scopely announces expansion to the Platform



[www.olivehillgroup.com](http://www.olivehillgroup.com)



Source: Lorem ipsum dolor sit amet, consectetur adipiscing elit, sed diam nonummy nibh euismod. Lorem ipsum dolor sit amet, consectetur adipiscing elit, sed diam nonummy nibh euismod. Lorem ipsum dolor sit amet, consectetur adipiscing elit, sed diam nonummy nibh euismod.

**OLIVE HILL GROUP**