

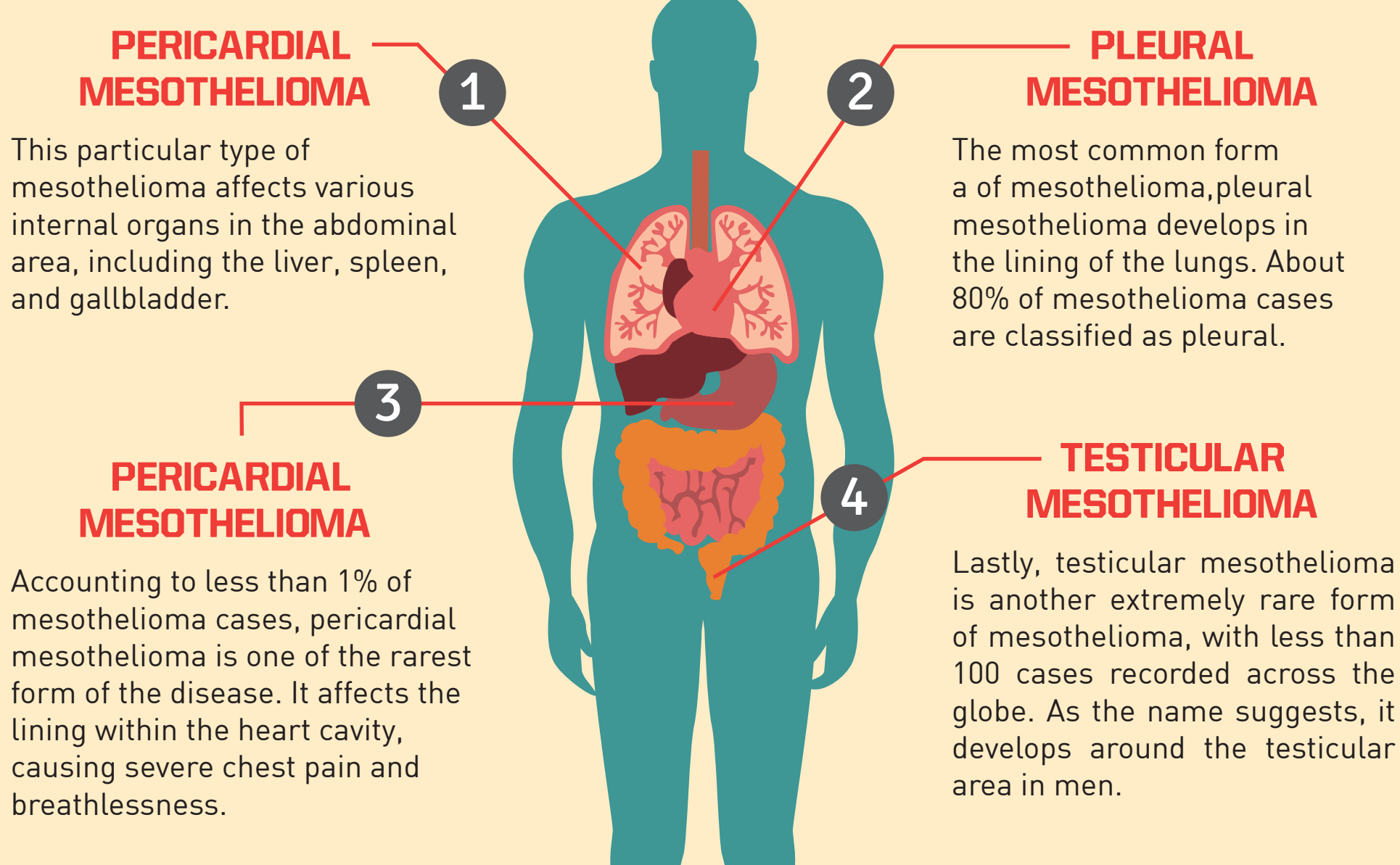
# MESOTHELIOMA CANCER

## WHAT YOU NEED TO KNOW

Mesothelioma (pronounced 'me-zoe-thee-lee-o-muh') is a type of cancer that affects the tissue layer mesothelium, which is the lining of certain internal organs in the human body. While cases of mesothelioma are quite rare, the disease has no known cure.

### DIFFERENT TYPES OF MESOTHELIOMA CANCER<sup>1</sup>

MESOTHELIOMA CANCER HAS FOUR PRIMARY TYPES:



### WHAT CAUSES MESOTHELIOMA?<sup>2,3,4,5,6</sup>

The leading cause of mesothelioma is the inhalation of asbestos, which consists of six naturally-occurring fibrous minerals:



#### CHRYSOTILE

Used in the past for thousands of home products, including asbestos cement, roof coatings, and gaskets.

#### AMOSITE

Due to its absorptive properties with liquids and wave energies, it is used in materials that provide acoustic insulation and condensation reduction. Products include slabs, insulation boards, and pipes.

#### CROCIDOLITE

Known as more carcinogenic than other types of asbestos, crocidolite is the fibrous form of riebeckite or magnesioriebeckite. It is used in cement and pressure piping products.

#### ACTINOLITE

While found as a contaminant in certain asbestos products, actinolite is also widely used in schools, homes, and other types of infrastructures. Due to their properties, they are utilized for structural fireproofing, concrete aggregates, thermal insulation, and so on.

#### TREMOLITE

Although traces of tremolite are sometimes found in sealants, paints, and roofing materials, it's one of the types of asbestos that have no commercial use.

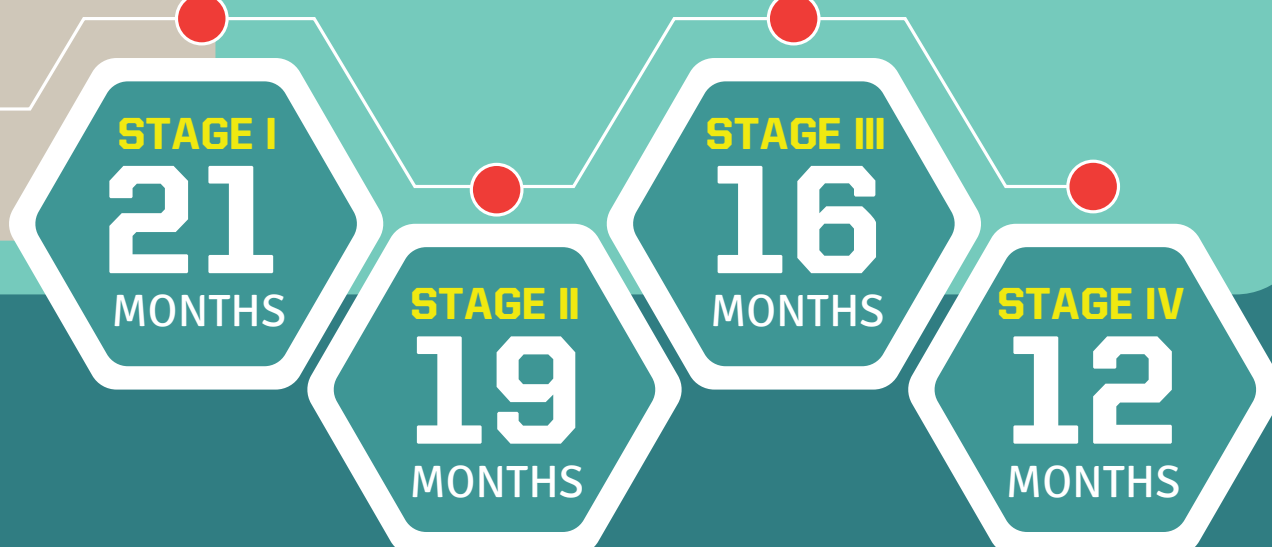
#### ANTHOPHYLLITE

Lastly, anthophyllite is another type of asbestos with no commercial use. Still, it is occasionally found as a contaminant, usually in composite flooring.

### DEATH RATE<sup>7</sup>

There's no denying that mesothelioma is a serious condition. According to statistics, the 5-year survival rate sits between 5% & 10%. Statistics also show that younger patients are more likely to survive longer.

When it comes to survival times, the median survival period declines as the disease advances:



### ABOUT MESOTHELIOMA TRUST FUNDS<sup>8, 9</sup>

Mesothelioma cancer is a real threat, especially to tradesmen such as plumbers, construction workers, and electricians. Since it is primarily caused by asbestos inhalation, most patients are covered by asbestos trust funds, which are offered by over 58 companies in the United States.

Today, more than **\$30 BILLION** are put aside to compensate employees as well as their families.



UNFORTUNATELY, MESOTHELIOMA RESEARCH IS WAY BEHIND OTHER FORMS OF CANCERS -- MAINLY DUE TO THE RARITY OF THE DISEASE.

HERE ARE SOME FACTS:

In 2012, a **\$5 MILLION** funding stream was provided through the Congressionally Directed Medical Research Programs of the Department of Defense.

From 2004-2007, only **0.1% (\$6 MILLION)** of the NCI's (National Cancer Institute) **\$6.4 BILLION** budget were allocated for mesothelioma cancer.

#### MESOTHELIOMA TRUST FUNDS

In 2008, a grant of **\$1.36 MILLION** was given to Courtney Broaddus, MD, for her progress in researching macrophage-induced inflammation in mesothelioma.

### OTHER FACTS<sup>10,11, 12</sup>

After exposure to asbestos, the time it takes before a proper mesothelioma diagnosis can be made is between **20 & 50 years**.

Out of all patients diagnosed with mesothelioma cancer, around **70-80%** were exposed to asbestos.

**1%** of mesothelioma patients inherited the disease -- typically due to the mutation in the gene: BAP1.

From 1999-2015, malignant mesothelioma reportedly claimed a total of **45,221** victims.

#### SOURCES:

- <https://www.mesothelioma.com/mesothelioma/types/>
- <https://www.asbestos.com/mesothelioma/causes.php>
- <https://www.ncbi.nlm.nih.gov/pubmed/7978966>
- <https://mesowatch.com/amosite-asbestos/>
- <https://www.asbestos.com/asbestos/types/>
- <https://www.cancer.org/cancer/malignant-mesothelioma/detection-diagnosis-staging/survival-statistics.html>
- <https://www.mesotheliomatreatmentcenters.org/asbestos-minerals/actinolite/>
- <https://www.asbestosliamafund.com/asbestos-trusts/>
- <https://www.asbestos.com/mesothelioma/government-research/>
- <https://www.cancer.org/cancer/malignant-mesothelioma/causes-risks-prevention/risk-factors.html>
- <http://www.cancer.net/cancer-types/mesothelioma/risk-factors>
- <https://www.cdc.gov/mmwr/volumes/66/wr/mm6608a3.htm>