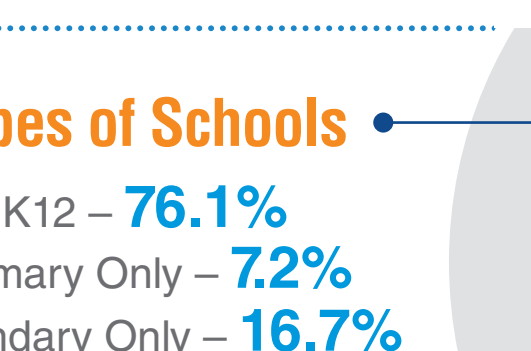


APPSEVENTS 2016 SURVEY OF TECHNOLOGY & GOOGLE Use In International Schools

AppsEvents works with International Schools worldwide on Google training and consulting engagements. We decided to conduct an open survey to look at how schools were using Google tools and also how this fits into their wider technology initiatives.

BASIC QUESTIONS ABOUT THE SCHOOL & IT SET UP

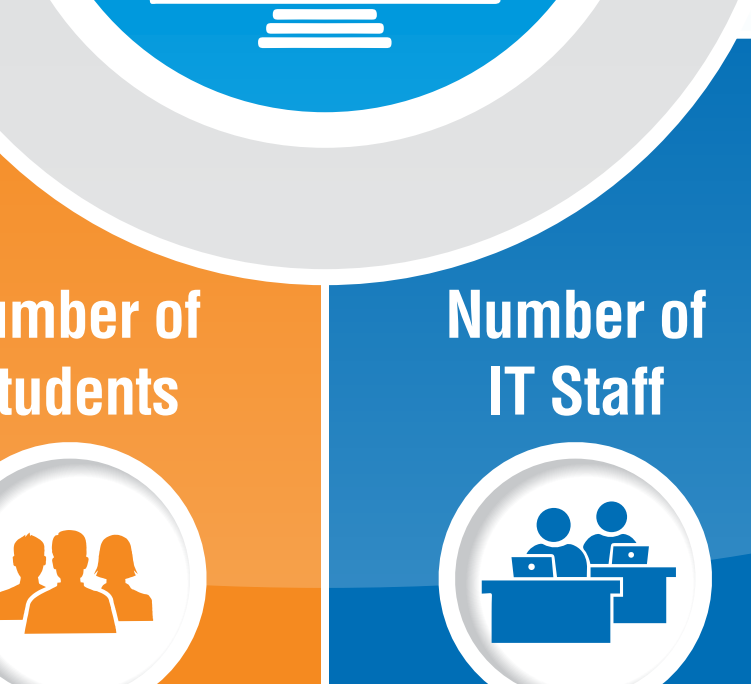
WHO COMPLETED THE SURVEY?



We had 335 International Schools complete the survey from Burkina Faso to Macau. Here is some info about the International Schools who completed the survey

Types of Schools

K12 – 76.1%
Primary Only – 7.2%
Secondary Only – 16.7%



What Kind of Schools are these?

Part of a larger group of schools – 40.1%
Standalone – 59.9%

Number of Teachers

1-10 – 1.5%
11-30 – 11.2%
31-50 – 18.1%
51-100 – 35.0%
101-200 – 22.4%
>201 – 11.8%

Number of Students

1-250 – 10.8%
250-500 – 22.3%
500-1000 – 33.7%
More than 1000 – 33.1%

Number of IT Staff

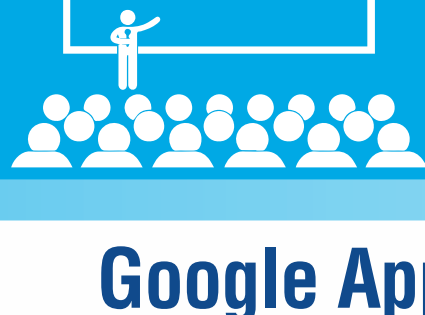
1-5 – 65.8%
6-10 – 22.5%
10-15 – 6.9%
15-20 – 1.5%
Over 20 – 3.3%

Number of EdTech integration (or similar) staff?

None – 21.8%
1-5 – 69.1%
6-10 – 4.8%
10-15 – 2.4%
15-20 – 0.6%
Over 20 – 1.2%

Now let's get into how these schools are using technology....

GOOGLE APPS USE



The popularity of Google Apps in the classroom is increasing rapidly and implementation varies widely by type of institution, curriculum and size of staff and student body.

Google Apps

Do You Use Google Apps at your school?

No - 4.2% Yes - 95.8%

Gmail

Are you using Gmail on your School Google Apps accounts?

8.4% No - 28
3.9% Students create own Gmail accounts - 13
87.7% Yes - 293

All schools were using Google Drive - more than were using Gmail

Google accounts

Does your school offer Google accounts?

94.6% Both staff and student accounts
5.4% Only Staff accounts

Are you using Chromebooks in your school?

Q1 2016 is the first time Chromebook sales overtook those of Macbooks in the US. 48% of our international respondents stated they used them.

If yes, how many Chromebooks?

16.3% 1-20
21.8% 20-50
15.0% 50-100
29.3% 100-250
17.7% 250>

Virtually all schools were using the Chrome Browser

64%

are managing it across the school and the same number are provisioning Chrome extensions across the school

The growth in Google Classroom has been explosive.

Not using Classroom – 26.4% Using Classroom 73.6%

Are you using tablets at your school?

26.5% No – 87
73.5% Yes – 246

But iPads still reign supreme...
16.3% Android – 41
83.7% iOS – 210

If yes, how many Tablets?

1-20 16.6%
20-50 32.3%
50-100 18.8%
100-250 22.3%
250> 7.4%
BYOT/BYOD 2.6%

Approximately what % of your work is 'in the cloud' on Google Apps servers?



5.7% 10%
5.7% 20%
5.7% 30%
6.3% 40%
7.9% 50%
4.1% 60%
11.9% 70%
23.3% 80%
19.5% 90%
10.1% 100%

In your staff do you have a...

Google Apps Certified Administrator 17.9%
Google Apps Deployment Specialist 3.3%
Google for Education Certified Trainer 25.2%
Google Certified Innovator 9.7%
None of the Above 43.8%

During migration to, and subsequent use of Google Apps within your school, how do you feel about the training you received?

40% of respondents want more training

Excellent - school has supported all our training needs and is ongoing 14.1%
Good - training was offered and mostly matched my needs 32.3%
Need more - really would like to receive training and Google Apps usage ideas 40.1%
Didn't receive training and don't need it 13.5%

Has Google Apps usage made your job become easier or reduced your workload?

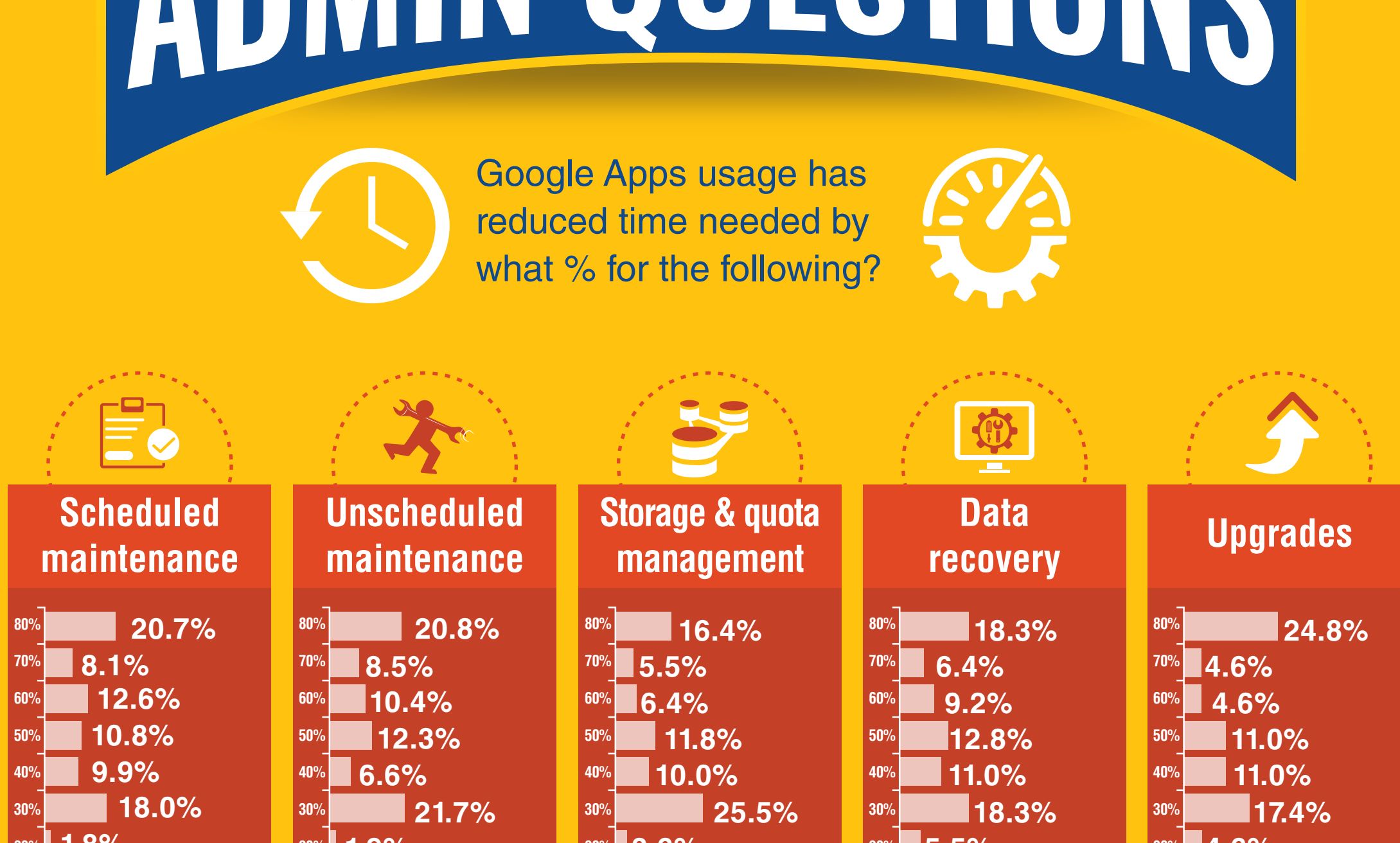
Google Apps

"Google Apps has enhanced productivity" said 94.5% of respondents

5.3% No
52.2% Not reduced, but allowed me to do more
42.5% Yes

GOOGLE APPS ADMIN QUESTIONS

Google Apps usage has reduced time needed by what % for the following?



OTHER SYSTEMS YOU ARE USING

Our survey showed a trend of a few large systems dominating each system category and then many schools using a huge range of different systems.

School Management System

Hapara is the clear winner with more than half of the schools using Hapara Teacher Dashboard. Other popular systems were: ManageBac, Schoology and Edmodo.

Learning Management System (LMS/VLE)

Moodle is the clear winner although many schools said they were looking at moving away from it. Secondly Google Classroom, ManageBac, Edmodo and Schoology, Teamie and Haiku all had wide usage.

School Information System (SIS)

PowerSchool is the clear winner used by over 60% of schools. Blackbaud, ManageBac, SchoolBase, Veracross and SIMS are all widely used too.

Web filtering

Barracuda, FortiGate, Palo Alto, OpenDNS, Sophos and GoGuardian were all roughly equal in usage.

Where do teachers enter grades for report cards?

ManageBac and PowerSchool lead the way with over half of schools. Sycamore, Skyward, RenWeb, Engage, Aspen, Dexter and Veracross all widely used.

IN CONCLUSION

Finally where do schools stand on a complete move to the cloud?

Does your institution anticipate moving to be completely in the cloud (all data on cloud based servers)?

Our survey showed roughly half were looking for a complete move to the cloud

Yes 49.8%

NO 50.2%

If yes, the institution will be completely in the cloud within...

29.7% 1 YEAR

60.4% 3 YEARS

9.9% 5 YEARS

Infographic produced by the AppsEvents team - Experts in Google Apps training and technical assistance for International Schools worldwide.

Do you need help or would you like more detailed survey data? Contact us at veronika@appsevents.com

Looking for help with PD? Just fill in this form gg.gg/requestinfo